



Using Mapa global interactivo

Mapa global interactivo

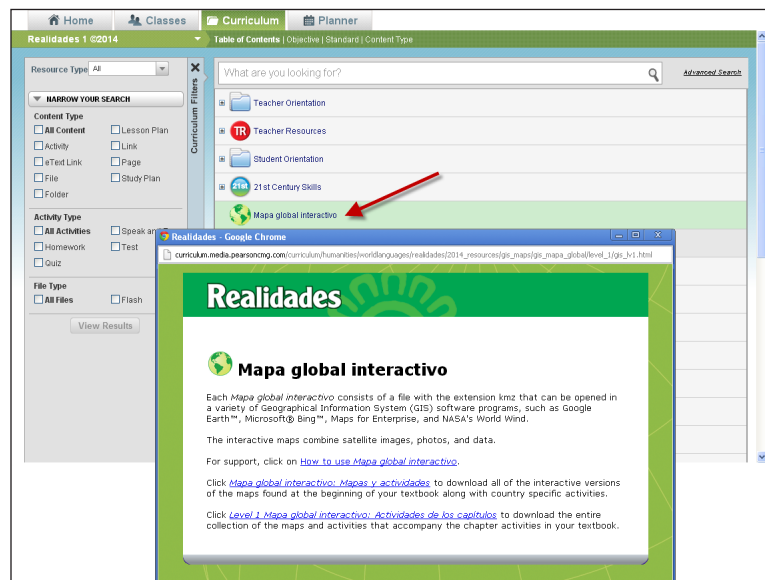
iVamonos! This guide explains how you can tour the Spanish-speaking world with Mapa global interactivo.

The Mapa global interactivo maps and activities in Realidades use geographic information system—or GIS—technology to transport students to regions, countries, cities, and landmarks throughout the Spanish-speaking world.

Green globe icons located throughout the student edition in the map section and within a chapter next to an image, an activity, or a Fondo cultural, indicate an accompanying downloadable Mapa global interactivity.

Accessing the Files

To access these activities, you must be logged in to realidades.com or the mobile eText. You can find the Mapa global files within the Pearson Curriculum in a separate folder and within different chapter sections.



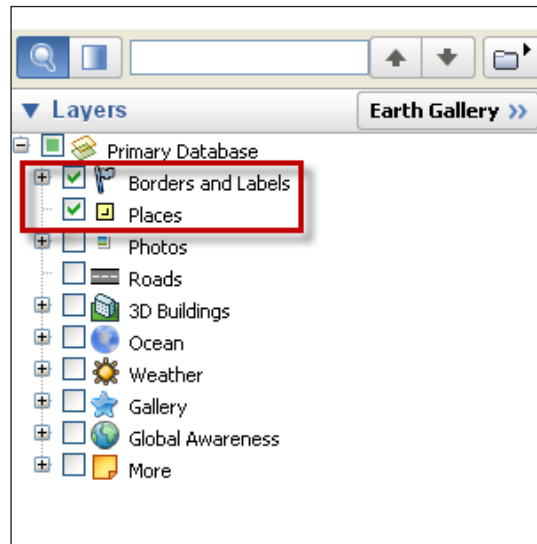
The eText also contains the files in either in a side drawer or as a live link within each chapter at point of use.

Click the KMZ file that you want to download to your computer or tablet. After downloading the file, you can open it with a geo-browser such as Google Earth™ mapping service.

Using Mapa global interactivo in a GIS System

Here's how you can use Mapa global interactivo with Google Earth™ mapping service. First, download the KMZ files and the GIS software to your computer. Click the KMZ file to open and launch the activity. You may need to unzip the KMZ file if your computer does not automatically open it. When you open a KMZ file, the file appears in the Places pane on the left-hand side of your screen.

Before beginning the tour, make sure to select **Borders and Labels** and **Places** under Layers in the bottom left of your screen.



The text of each activity provides additional instructions for optimal viewing.

To begin your tour, double-click the first link next to the icon under Places. This takes you to the introduction and objective, directions to the Student Worksheet, and the first location in the tour. Uncheck any boxes next to the links you're not using for optimal viewing. Double-click the other Vista links to fly to the next location on the tour.

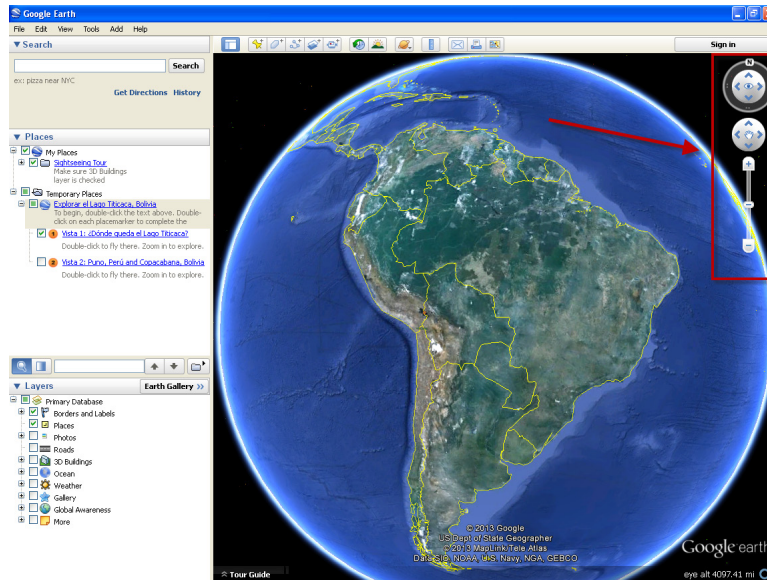
Toolbox and Features

Each GIS software program provides a variety of tools to help complete activities and interact with the maps.

In the Google Earth™ program, there is a Placemark, Path, and a Measuring Tool in the top bar of the screen.



To navigate using Google Earth™, move your cursor to the upper-right side of your screen to reveal the navigational buttons. These buttons allow you to zoom in or out, look in various navigational directions, and travel forward and backward on the ground in the street views.



When you close the file, the program may ask you if you want to save your changes. You can add other places in your file, save it as your own, or download the original file at any time.

Review

This guide explained how you can tour the Spanish-speaking world with Mapa global interactivo.