



Utilizing ExamView to Prepare Students for the Common Core Assessments

Introduction

This guide explains how to use ExamView to build assessments that prepare students for the Common Core State Standards for Mathematics (CCSSM) exams.

ExamView Assessment Suite

The ExamView Assessment Suite, which includes the Test Generator, Test Manager, and Test Player, is a comprehensive solution for creating, administering, and scoring tests. The software includes many features to save you time and generate information to assess and improve students' performance in mathematics.



Begin by updating your question banks, so you can access the new CCSSM questions. Click the Help button, and then select the Check for Content Updates option.

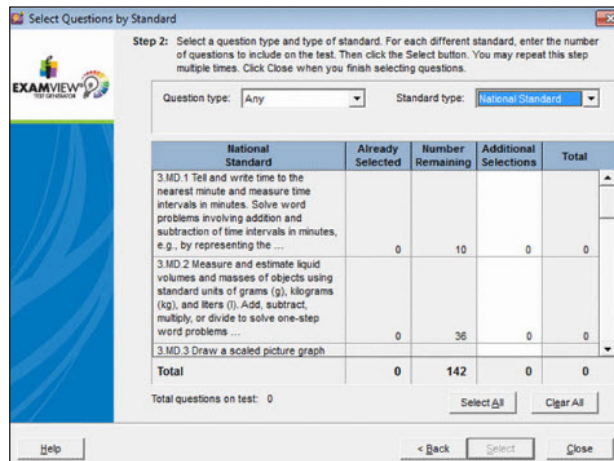
CCSSM Assessments

The CCSSM assessment requires students to apply key mathematical skills, concepts, and processes to solve complex problems. The goal is to mirror situations encountered in everyday life, work, and decision making to prepare students for college and careers.

The CCSSM assessment has a variety of question types, including selected-response, constructed-response, and technology-enhanced problems. You can use ExamView to create tests just like these.

Creating an Assessment to Prepare for the CCSSM

The ExamView Test Generator offers several options to create a new test. Click **Select By Standard** to choose the questions. Now you are ready to work with your assessment.



To mirror the CCSSM assessment, you should include constructed-response and technology-enhanced problems.

Constructed-Response Tasks

Constructed-response items are also referred to as open-ended or performance tasks.

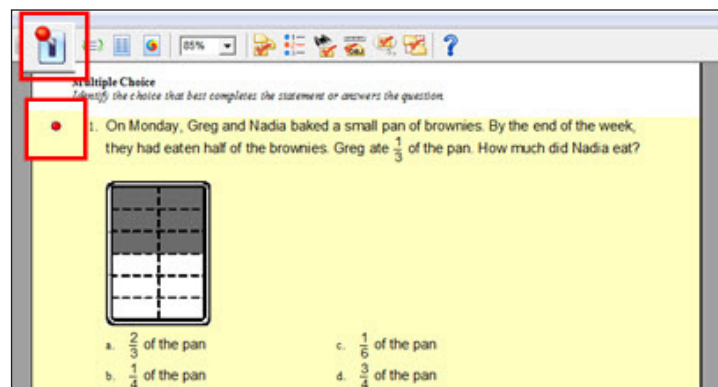
Constructed-response items typically have the following characteristics:

- The tasks are open-ended.
- There is more than one way to answer correctly.
- The tasks require active performance that includes reasoning, synthesis, evaluation, and higher-order thinking.

You have several different options to include constructed response items on your test.

Bimodal Questions

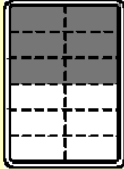
Within ExamView, some questions are labeled as bimodal. For these questions, you have the option to change multiple-choice to constructed-response questions. The red dot next to the question indicates that a question is bimodal.



When you convert a selected-response question to a constructed-response question, you can test a variety of skills. Students can exhibit their procedural fluency, justify their answers, and explain their reasoning. Thus, they develop their expertise around the mathematical practices.

15. On Monday, Greg and Nadia baked a small pan of brownies. By the end of the week, they had eaten half of the brownies. Greg ate $\frac{1}{3}$ of the pan. How much did Nadia eat?

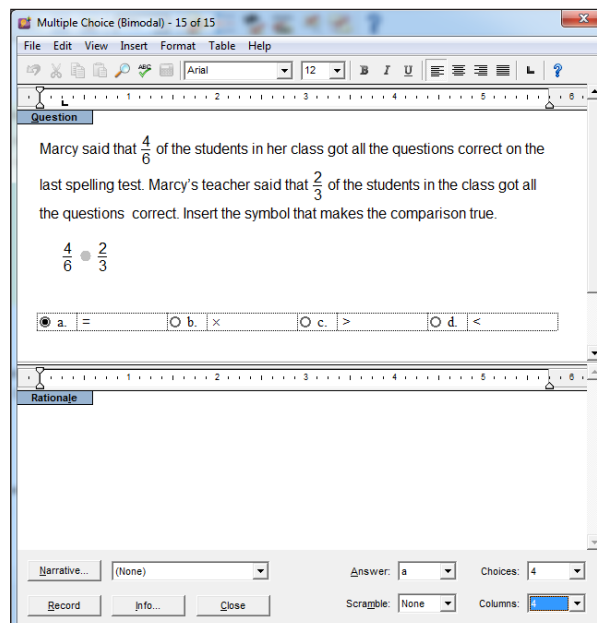
Write a sentence, or draw a picture to explain your answer.



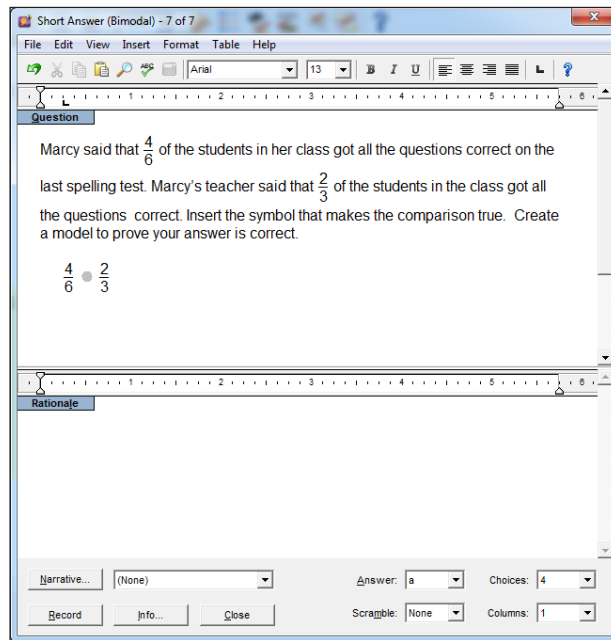
Editing Questions

To add to the depth of knowledge, you may wish to edit a question. This allows you to scaffold the content and test students' higher-order thinking skills.

Here, the original question requires only basic procedure. You can have students delve deeper into the mathematics by adding steps that ask them to apply their knowledge.



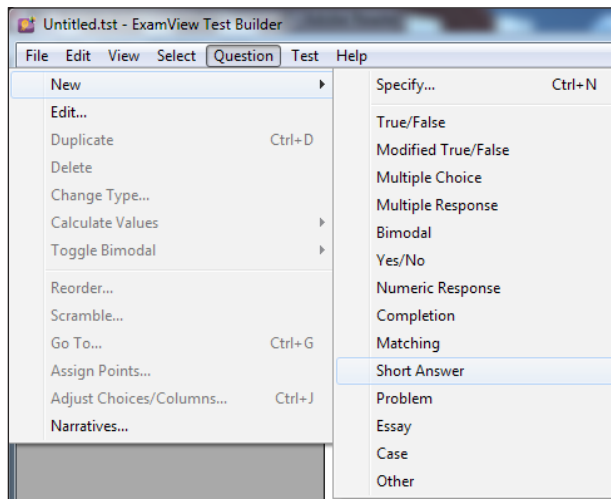
With a few simple edits, you are able to transform a basic content question into a higher-order thinking task.



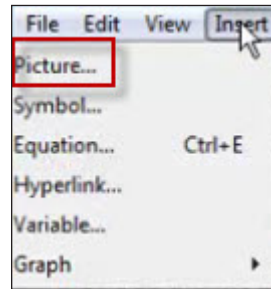
Adding Questions

In addition to editing questions, you may also wish to create your own performance-based tasks.

Simply select the type of question you would like to create, and add the content. You can even include images to increase the richness of the task.



To add an image, click **Insert**, and select from the drop-down menu. You can add graphs or your own custom images.



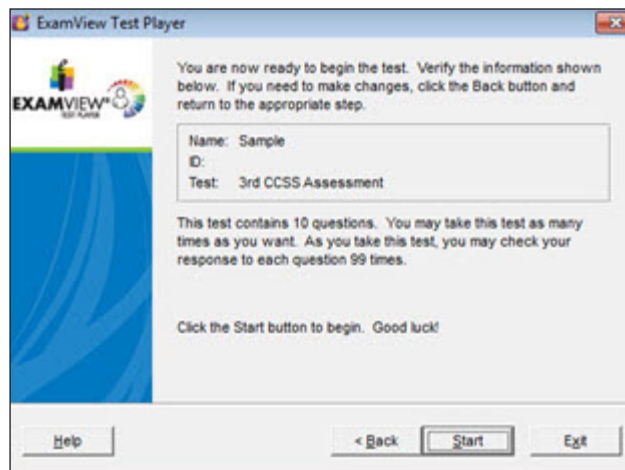
Revise Instructions

Now that you have added constructed-response items to your test, you may wish to revise the instructions to mimic the expectations of a CCSSM assessment.

ExamView functions much like your favorite document software. Double-click the instructions to make changes to the text. It is important for your students to construct viable arguments and model with mathematics.

Computer-Based Assessments

The ExamView Test Manager and Player software allows your students to take computer-based tests to prepare for the CCSSM assessments.

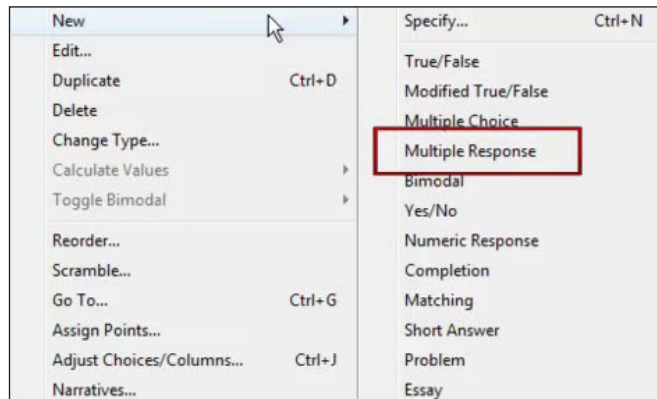


Technology-Enhanced Questions

Using the software, students can provide evidence of the mathematical practices through the use of technology. ExamView offers multiple question types similar to the technology-enhanced items that are embedded in the CCSSM assessments.

This includes

- multiple response;
- numeric response; and
- completion.



Review

This guide explained how to use ExamView to build assessments with selected-response, constructed-response, and technology-enhanced problems to prepare students for the CCSSM exams.