

## ClassView Setup for EasyBridge Plus and EasyBridge Auto

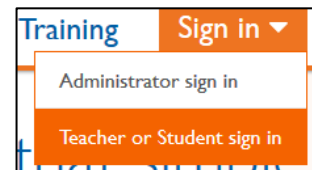
### Introduction

This handout explains how teachers can add ClassView products to classes on EasyBridge Plus or EasyBridge Auto. ClassView is a learning platform used to set up classes and manage student rosters for the following literacy programs: *iLit* 90, *iLit* 45, *iLit* 20, *iLit* ELL, myPerspectives™ ELD Companion, and Words Their Way™ Digital.

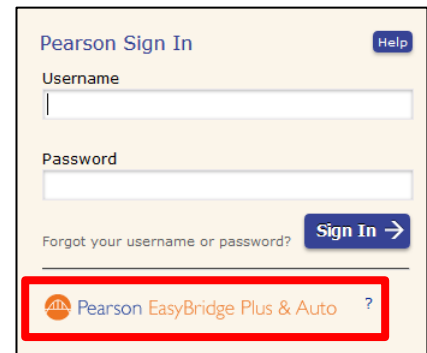


### Accessing Savvas EasyBridge

To begin adding products to your classes, first login to your Student Information System (SIS) or district portal. Contact an administrator in your district if you are unsure where to go to access Savvas EasyBridge from your SIS. Alternatively, you can sign in directly through Savvas EasyBridge. Follow the steps below to sign in at PearsonEasyBridge.com:



1. Click the Sign in drop down arrow and select **Teacher or Student sign in**.
2. Click the **Savvas EasyBridge Plus & Auto** logo.
3. Select your District/Organization.
4. Click **Go**. This redirects you to your district's Student Information System (SIS) or district portal.
5. Enter your username and password and click **Sign In**.



### When to Add Products

You can add your Savvas literacy products to each class through EasyBridge. You will need to complete this step at the beginning of each school year.

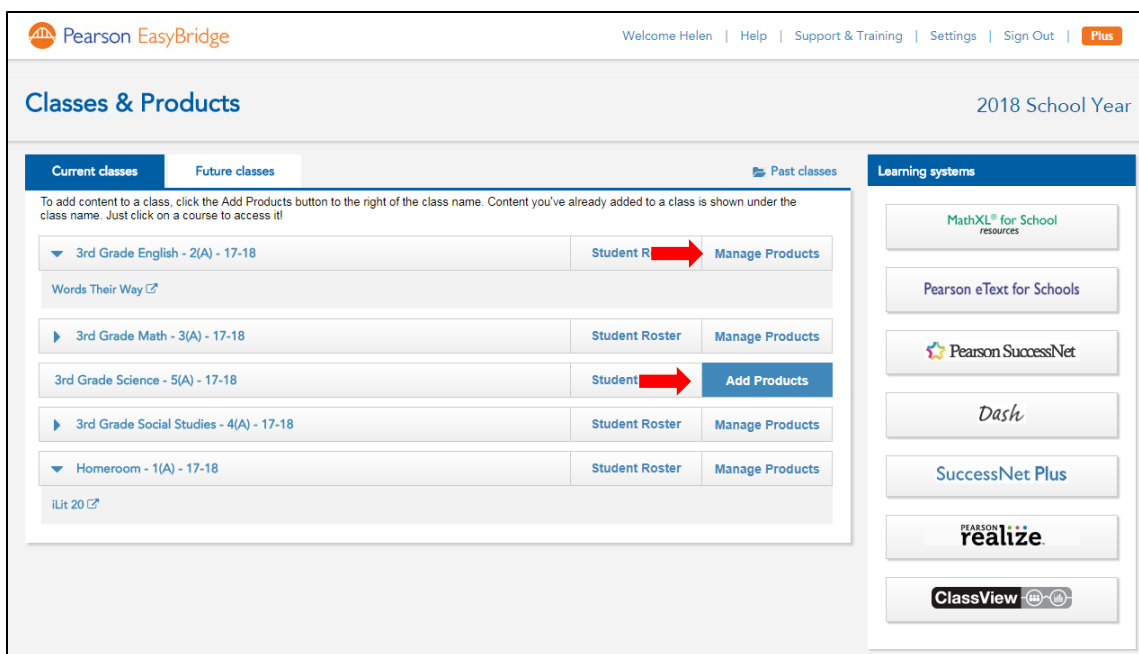
If you teach quarter or semester courses, you will need to add products to classes at the beginning of each new term. As the new term approaches, you will see your classes appear on the **Future Classes** tab.

**Best Practice:** *It is a best practice to add products to future classes when you are ready for students to see the class on the learning platforms.*

## Adding Products

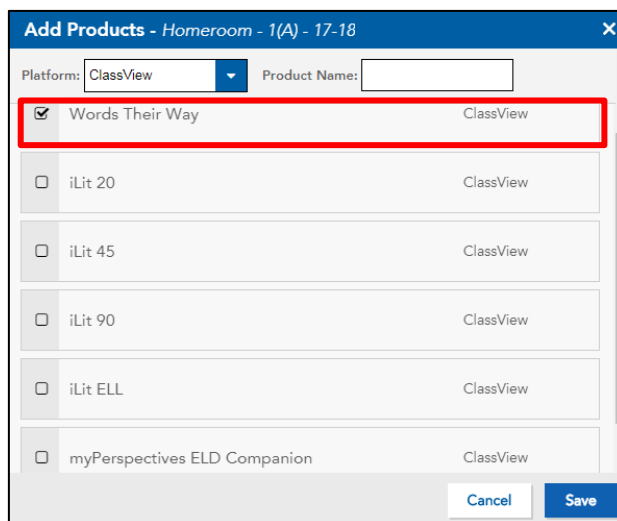
Follow the steps below to add a Savvas ClassView product (*iLit*, Words Their Way™ Digital, *myPerspectives*™ ELD Companion) to a class:

1. From the **Classes & Products** screen, select either **Current classes** or **Future classes**.
2. Find your class to which you would like to add literacy products.
3. Select **Add Products**, if you currently do not have any products associated yet. Click **Manage Products** to add more products.



4. Select *ClassView* in the Platform drop down menu. Check the box(es) for your product(s) you would like to add. Click **Save**.

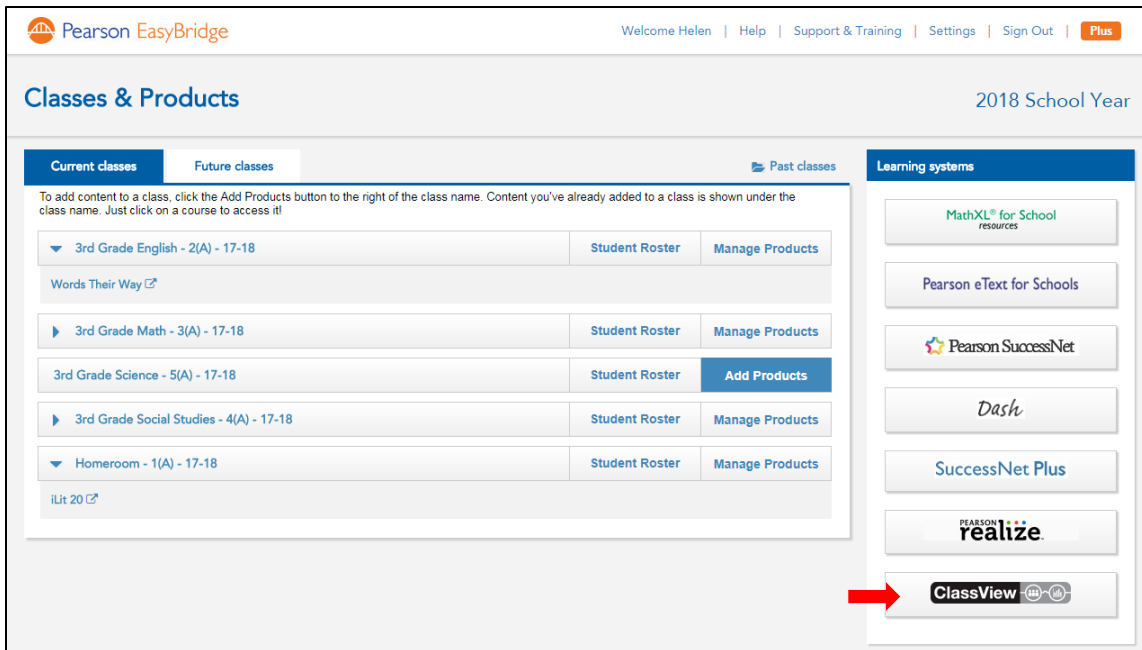
**Note:** Once you add a product to the class and complete the ClassView setup using the steps below, students will have access to the course on ClassView. Only select one literacy product per class.



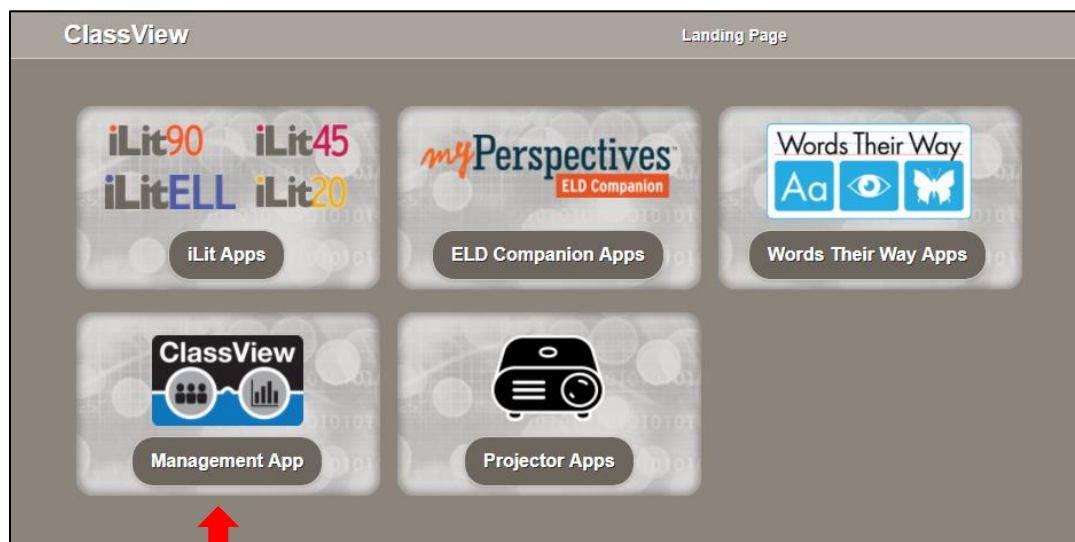
## Complete ClassView Setup

Before you can access your ClassView product for the first time from EasyBridge, you will need to complete the following steps:

1. Choose **ClassView** from the Learning Systems menu on the right side of the screen. This takes you to the ClassView landing page in a new window. You will see all of the apps for products you have selected for your classes.



2. Select the **ClassView** management app. This takes you directly to ClassView in a new window.



- Go to **Pending Classes** in the top menu bar.
- Select your school from the School drop down menu. Click **Filter**.
- Click the blue **Open** button to go to the class information. This opens a pop-up menu.

ClassView Management Welcome Helen Dawson!

Users Classes Reporting Monitoring Pending Classes

Home / Pending Classes

**Pending Classes**

Filter by

District: Apple Grove EB Plus PROD, Boston... School: Washington Elementary Filter

District	School	Class	Section PIF ID	Section Code	Teacher	Type	Alerts	
Apple Grove EB Plus PROD	Washington Elementary	3rd Grade English - 2(A) - 17-18	591f5873e4b0812a3a0e36ba	EL301 - 31	Helen Dawson	Update		<a href="#">Open</a>
Apple Grove EB Plus PROD	Washington Elementary	Homeroom - 1(A) - 17-18	591f5873e4b0812a3a0e36c5	HR - 31	Helen Dawson	Create		<a href="#">Open</a>

- Choose the appropriate **Grade Level** and enter the class **Period**. Click **Save**.

ClassView Management Welcome Helen Dawson!

Users Classes Reporting Monitoring Pending Classes

Home / Pending Classes

**Pending Classes**

Filter by

District: Apple Grove EB Plus PROD, Boston... School: Washington Elementary Filter

**Class Creation Input**

Product \*  
iLit 20

**Grade Level \***  
---Please Select---

Band \*  
---Please Select---

**Class Period \***

First Name \*  
Helen

Last Name \*  
Dawson

Class Name \*  
Homeroom - 1(A) - 17-18

Class ID \*  
c6866MA17827745

**SIS Import Data**

Section Name\*  
Homeroom - 1(A) - 17-18

Section Code\*  
HR - 31

Course Name\*  
HR - Homeroom

Session Start\*  
2017-05-22

Session End\*  
2018-05-11

**Pearson Import Data**

Section PIF ID\*  
591f5873e4b0812a3a0e36c5

[Save](#) [Cancel](#)

**Note:** The information icon on the right side of each tab provides information on this selection. Use the student's reading level as a guide when selecting grade levels. Refer to the table to the right or contact your Savvas Specialist for support and recommendations.

<i>iLit</i>	Words Their Way™ Digital	<i>myPerspectives™</i> ELD Companion
Level A = 4th Grade Level B = 5th Grade Level C = 6th Grade Level D = 7th Grade Level E = 8th Grade Level F = 9th Grade Level G = 10th Grade Level H = 11th Grade	There is only one choice available for this program. Select the Level K8.	Level C = 6 <sup>th</sup> grade Level D = 7 <sup>th</sup> Grade Level E = 8 <sup>th</sup> Grade Level F = 9 <sup>th</sup> Grade Level G = 10 <sup>th</sup> Grade Level H = 11 <sup>th</sup> Grade Level I = 12 <sup>th</sup> Grade

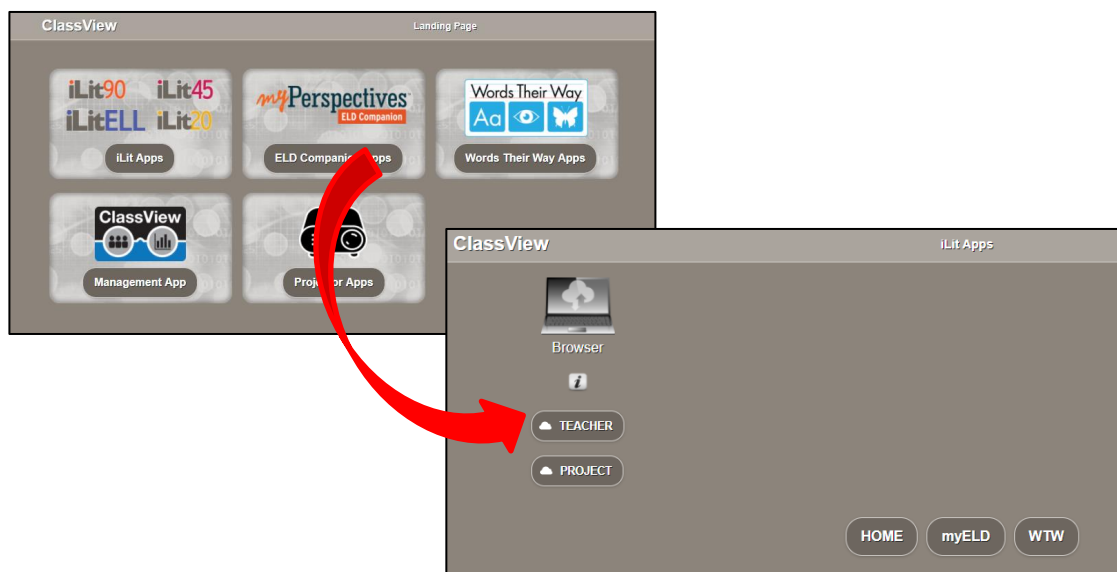
## Accessing Your Program

Teachers and students can access programs from EasyBridge in a browser or go directly to their programs from a mobile device. To access your programs from a computer or mobile device browser, follow the steps below:

1. Sign in to Savvas EasyBridge using the steps on page 1 of this document.
2. Find your class under **Current classes**, or **Future classes**.
3. Click the arrow to the left of your class name to see the associated product or products.
4. Select the product listed directly below your class.

**Note:** Alternatively, select **ClassView** under the Learning systems.

5. Click the app in the ClassView landing page for the program you would like to access.
6. Select **Teacher**. If you have already completed your ClassView setup, you will go directly to your program in a new window.



## Removing Products

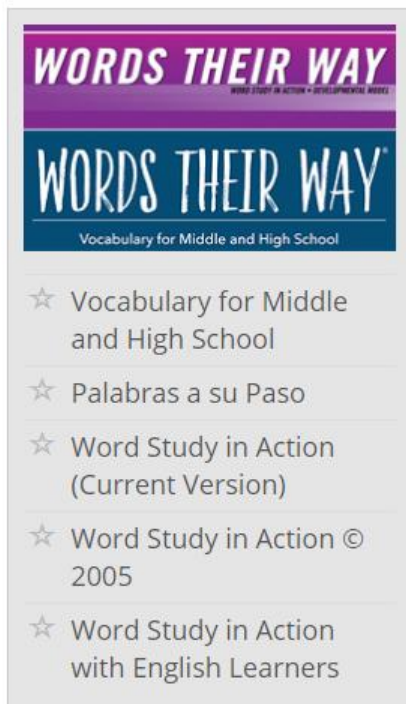
If you accidentally add the wrong product to a class or need to make a change, you must remove the product on Savvas EasyBridge.

1. Sign in to EasyBridge and click **Manage Products** to the right of the class name.
2. Find the product name in the list and remove the checkmark.
3. Click **Save**. You will see a warning message. When you remove a product from a class, all assignments and student progress data associated with that class are also removed. This action has permanent effects and cannot be undone. If you do not wish to remove the product, click **Cancel**. If you still wish to remove the product, click **Continue**.

## Resources

Go to [myPearson Training](#). Click *Products* in the top menu. Enter the product for which you would like more information, including tutorials, user guides and handouts. Select the specific program.

### Words Their Way™ Digital



### myPerspectives™ ELD Companion



### iLit

