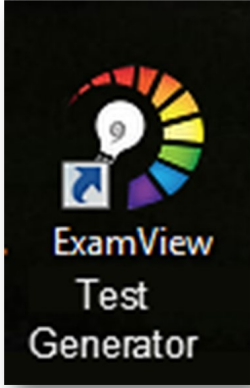
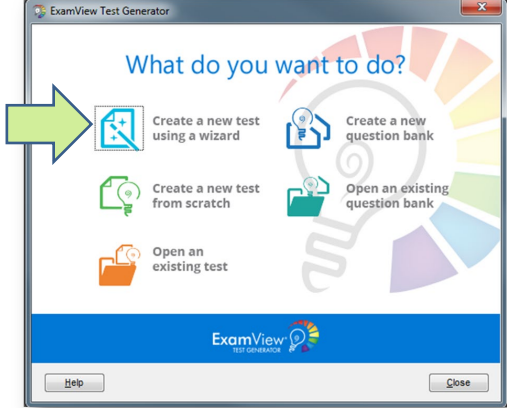
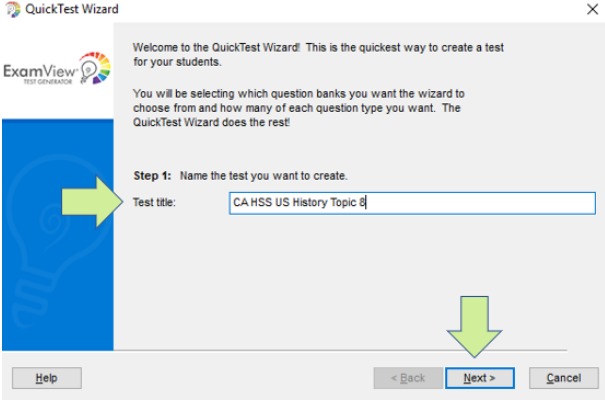
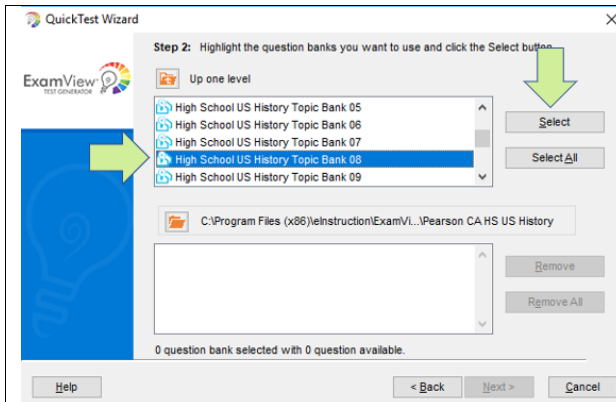


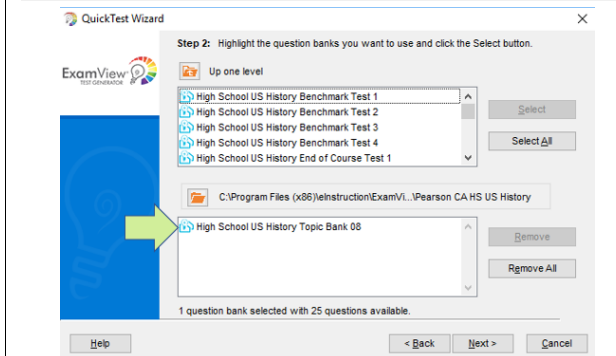
Digital Path: Creating and Customizing an ExamView® Assessment

Use the Digital Path guidance below to take control of monitoring progress! ExamView® Test Generator lets YOU decide the types of questions, types of responses, and best format that works for you and your students.

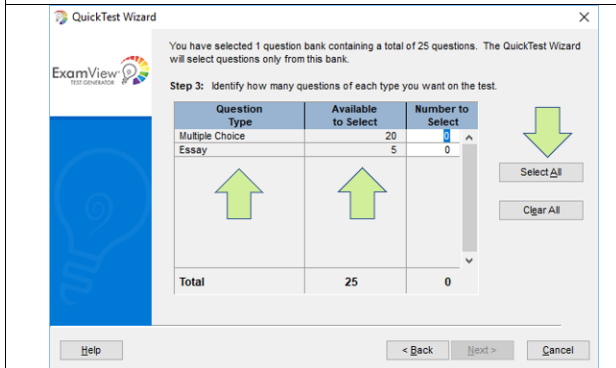
Digital Path	Click to Discover
	<p>Locate the ExamView Test Generator icon on your desktop to launch the program.</p>
	<p>Click Create a new test using a wizard.</p>
	<p>In Step 1, type the name of the test in the “Test title” field and then click Next.</p>



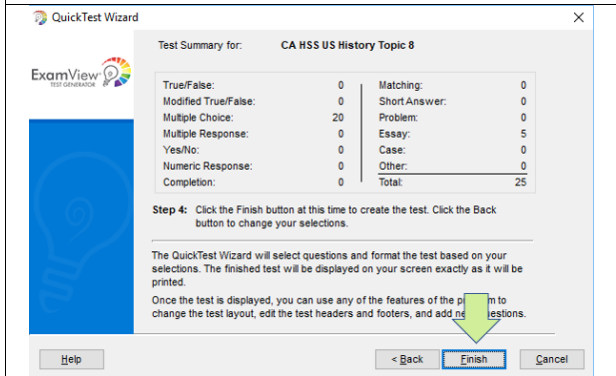
In Step 2, click the topic you wish to use to create the test and then click **Select**.



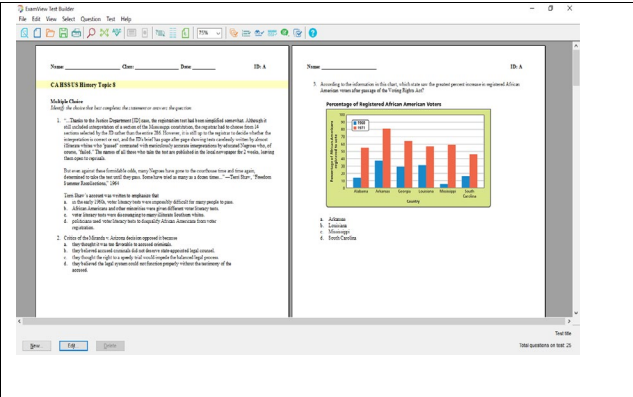
The question bank will appear in the field below, along with a summary of the number of questions available. Click **Next** to continue, or add additional chapters if you wish.



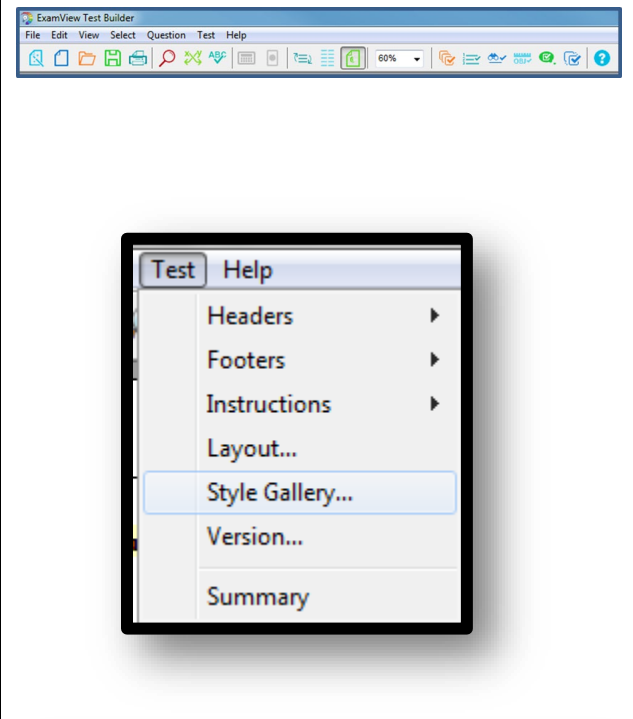
In Step 3, a summary of your selections will appear describing the question types (i.e., multiple choice, short answer, essay, and so on) and the quantity available for each type. You can enter the number of questions you want included for each type or click **Select All**. Then click **Next**.



In Step 4, a summary of all of your selections will appear. Verify your selections and then click **Finish**.



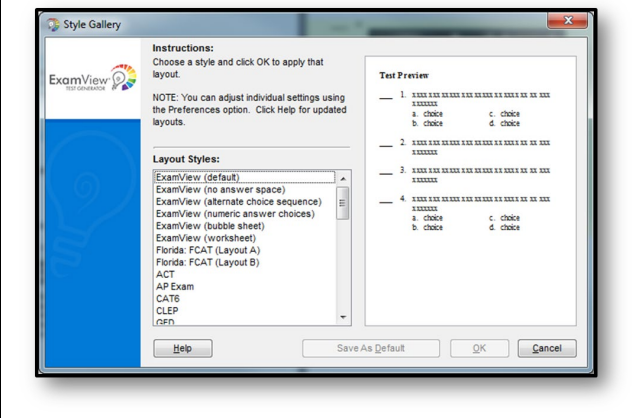
The assessment text will appear on screen. The answer key will appear on the last page.



Explore the various options in the toolbar to customize the test including the following:

- Save (saves the assessment as an ExamView .tst file)
- Print (choose **Print to PDF** on your computer's printer options for a digital file you can upload to Savvas Realize and assign to students)
- Reorder questions
- Column format
- Mix question types
- Select from a list (choose this option to add additional questions)

Click **Test** above the toolbar and then select **Style Gallery** to explore various formats for your assessment.



ExamView® Assessment Suite and ExamView® Test Generator are trademarks of elnstruction Corporation, which was not involved in the production of, and does not endorse, this product.